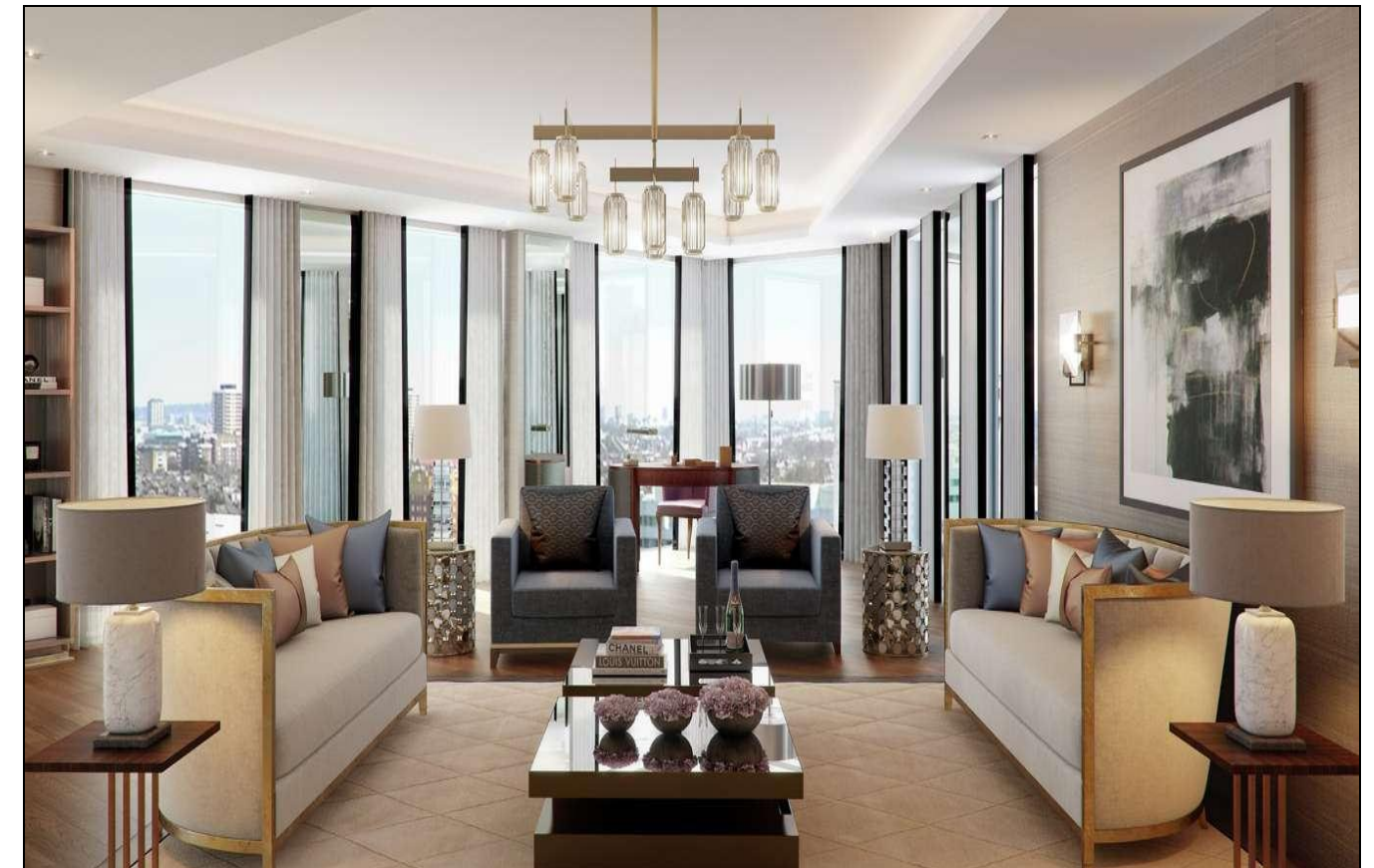
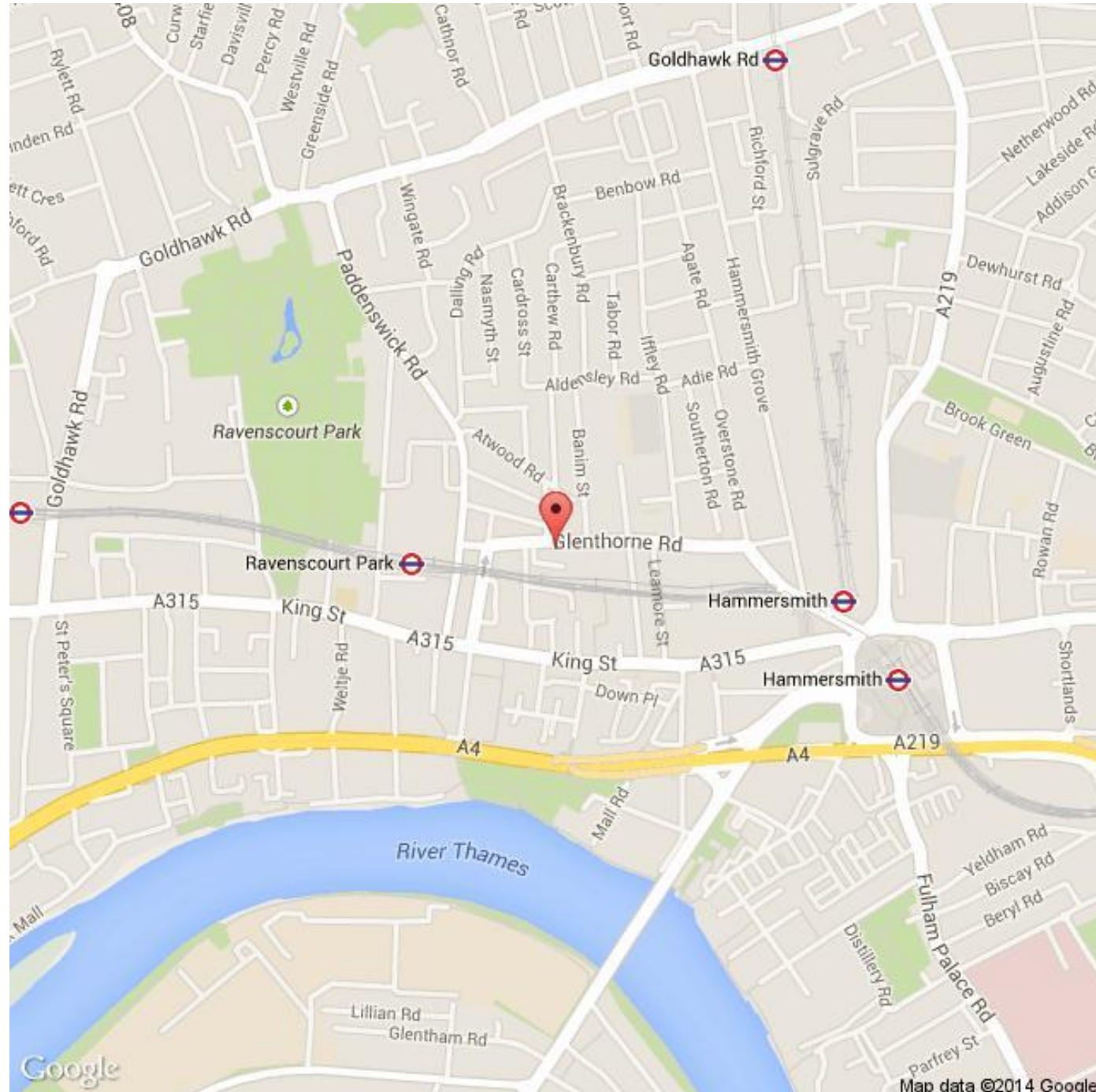


**West Kensington - 0207 381 0319**  
203C North End Road, West Kensington, W14 9NL



### **Sovereign Court, W6 0LJ**

An exceptional opportunity to acquire this brand new fourth floor contemporary apartment of approximately 913.9 ft<sup>2</sup> (84.9 m<sup>2</sup>). The accommodation includes an open plan living area with a balcony, kitchen with bespoke fittings, master bedroom with en-suite, second double bedroom and a guest bathroom. Further features include comfort cooling, interior designed entrance foyer, timber lift surround at every level, landscaped communal gardens, private gym as well as a 24 hour concierge service. This fantastic development could be a great investment opportunity as well as a superb lifestyle choice located in a heart of Hammersmith. Lancaster House at Sovereign Court is available as an off plan investment for completion in mid 2016.

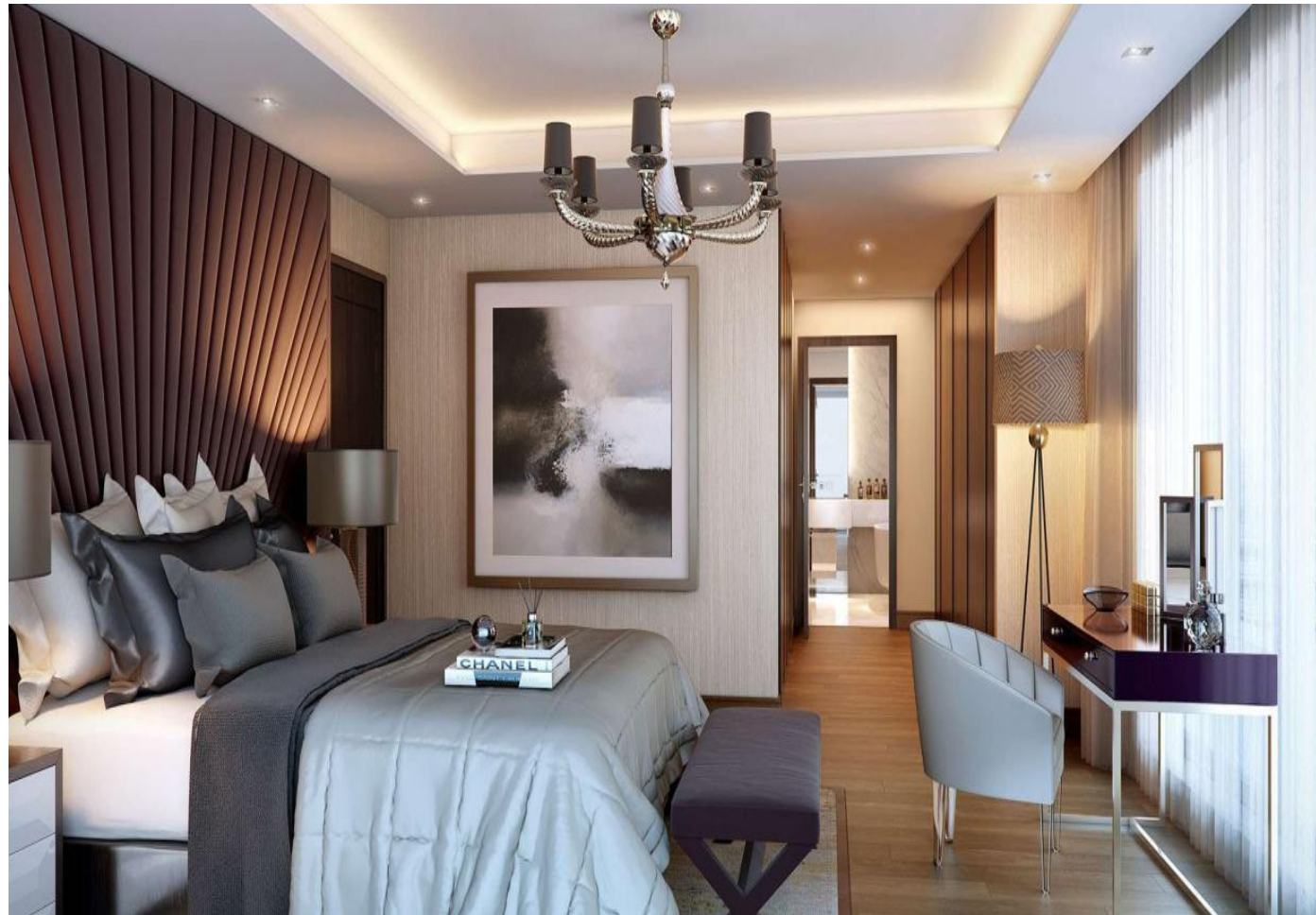
### **Asking Price £1,000,000 (Leasehold)**

For a full EPC Certificate please visit: <https://www.epcregister.com/searchReport.html> and quote report reference number:

These particulars have been prepared in good faith as a general guide as instructed by our clients. We have not carried out a detailed survey nor tested the services, appliances and specific fittings. Room sizes are approximate and are generally taken as maximum measurements and should not be relied on for fitting of carpets or furnishings. Formal notice is also given that all contents, carpeting, curtains, blinds and appliances are deemed removable by our client unless specifically included within these particulars. All properties are offered subject to contract.

[www.featherstoneleigh.co.uk](http://www.featherstoneleigh.co.uk)





**LANCASTER HOUSE**

APARTMENT 109	STANDARD 2 BED	
LIVING/DINING	3.82m x 7.42m	12'6" x 24'4"
KITCHEN	2.50m x 3.43m	8'2" x 11'3"
BEDROOM 1	2.76m x 5.02m	9'1" x 16'5"
BEDROOM 2	2.75m x 4.62m	9'0" x 15'2"

